

EASY FOLD

PORTABLE SCREEN

Vega Easy Fold Screen is specially designed for events, delivering presentation anytime and anywhere. It comes with a freight case for easy traveling. Its reinforced structure is suitable for either indoors or outdoors activities. Both front or rear projection fabrics are available.

STURDY FRAME DESIGN

Sturdy frame design with folding hinges. Can be easily erected without the need for tools.



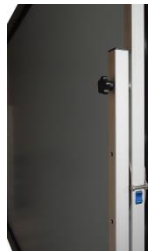
SIMPLE INSTALLATION

Screen attached with snap fasteners to frame for easy installation.



USER-FRIENDLY

The height of the frame can be adjusted to give the optimum projection height by simply adjusting the button.



CONVENIENCE FOR TRAVELING

All the frames, legs and fabrics can be packed into freight case for easy transportation and storage.



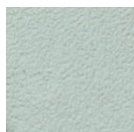
OPTIONAL ACCESSORIES



Drape Kit



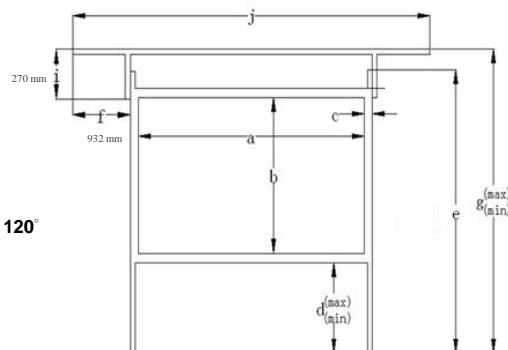
CHOICE OF FABRICS



PVC Matte White
 - Code: FWC
 - Gain: 1.1
 - Viewing Angle: 110°



PVC Rear
 - Code: RGG
 - Gain: 1.5
 - Viewing Angle: 120°



SPECIFICATIONS

Specification												
Product Code	Screen Size (HxW, inches)	Viewing Area(mm)		Border (mm)	Floor Distance (d)		Overall Height (g)		Draper Height (max) (mm)	Overall Width (j) (mm)	Packing Dimension LxWxH(mm)	G.W. (kg)
		Height	Width		Max Height (mm)	Min Height (mm)	Max Height (mm)	Min Height (mm)				
4:3 Video Format												
ESF060080	100"(60"x80")	1524	2032	80	281	141	2235	2095	1691	4056	1000x380x365	28
ESF072096	120"(72"x96")	1829	2438	100	939	189	3238	2488	2708	4502	1060x380x475	35
ESF090120	150"(90"x120")	2286	3048	100	936	183	3692	2942	3161	5112	1260x380x505	45
ESF108144	180"(108"x144")	2743	3658	100	557	257	3770	3470	3161	5722	1260x380x565	49
ESF120160	200"(120"x160")	3048	4064	100	327	177	3845	3695	3161	6128	1260x380x565	51
ELF150200	250"(150"x200")	3810	5080	100	323	173	4611	4461	4062	7144	1620x445x395 1620x445x650	54.15 66.99
ELF180240	300"(180"x240")	4572	6096	100	1368	168	6410	5210	6000	8160	1620x445x395 1770x565x695	53.8 75.9
16:9 HDTV Format												
ESF045080	92"(45"x80")	1143	2032	80	330	184	1903	1753	1509	4056	1000x385x475	32
ESF054096	110"(54"x96")	1372	2438	100	424	121	2264	1963	1809	4502	1060x380x565	38
ESF068120	138"(68"x120")	1727	3048	100	391	241	2588	2438	2109	5112	1260x380x625	49
ESF081144	165"(81"x144")	2057	3658	100	754	154	3284	2684	2709	5722	1260x380x685	56
ESF090160	184"(90"x160")	2286	4064	100	871	271	3621	3021	3161	6128	1260x380x685	58
ELF135240	275"(135"x240")	3429	6096	100	677	227	4567	4126	4062	8160	1620x445x395 1620x445x650	50 84
16:10 HDTV Format												
ESF050080	94"(50"x80")	1270	2032	80	425	145	1960	1810	1691	4056	1000x380x365	26.3
ESF060096	113"(60"x96")	1524	2438	100	281	141	2352	2202	1691	4502	1060x380x475	32
ESF075120	142"(75"x120")	1905	3048	100	901	151	2693	2543	2708	5112	1260x380x505	37.5
ESF090144	170"(90"x144")	2286	3658	100	936	183	3404	2955	3161	5722	1260x380x565	43
ESF100160	189"(100"x160")	2540	4064	100	659	359	3760	3160	3161	6128	1260x380x565	49
ELF125200	236"(125"x200")	3429	6096	100	283	196	4443	3843	3161	7144	1620x445x395 1620x445x650	53 65
ELF150240	283"(150"x240")	3429	6096	100	787	187	4611	4461	4062	8160	1620x445x395 1770x565x695	52 86



Vega MFG. Ltd.

21/F, Wyler Centre Phase II, 192-200 Tai Lin Pai Road, Kwai Chung, New Territories, Hong Kong.

T +852 2310 1138 F +852 2310 2068

generalm@vegamfg.com.hk

www.vegamfg.com.hk